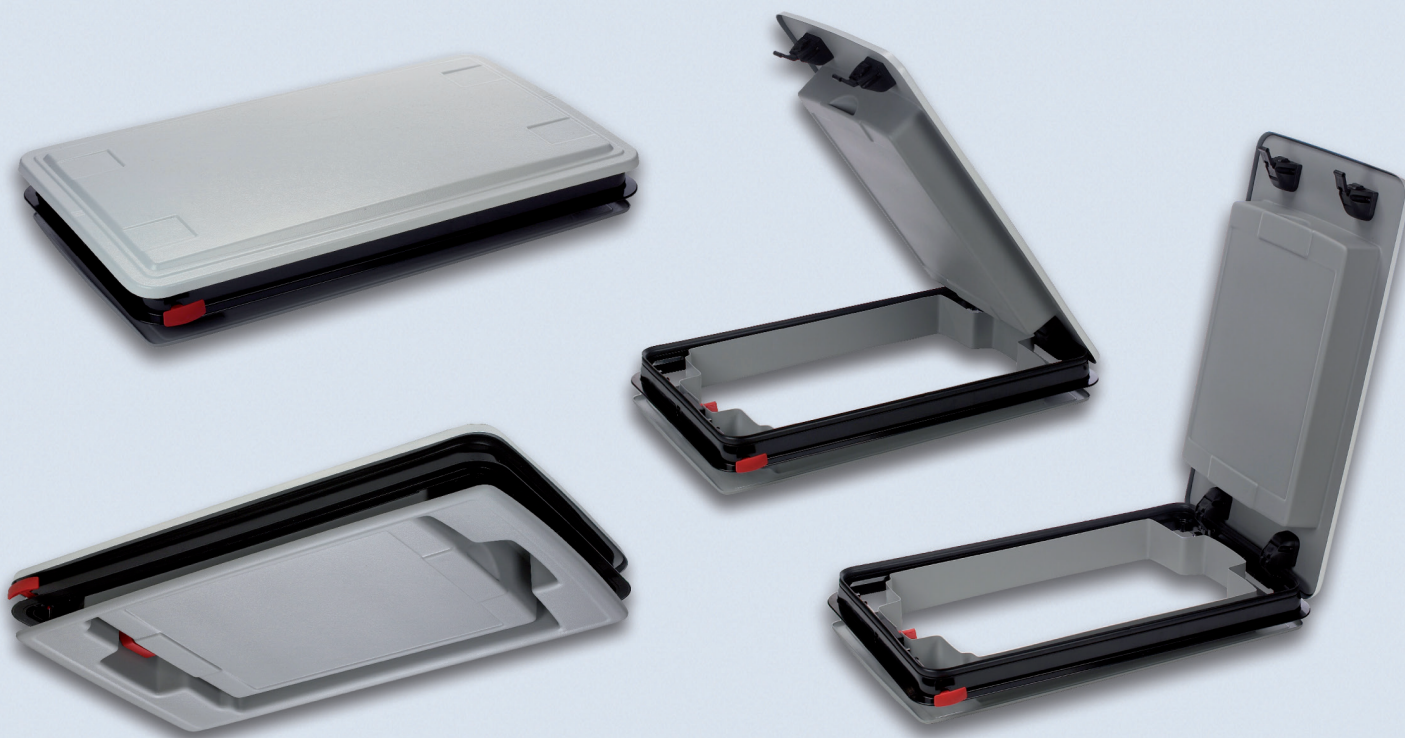


# ELEXX



## SAFETY, SERVICE AND COMFORT

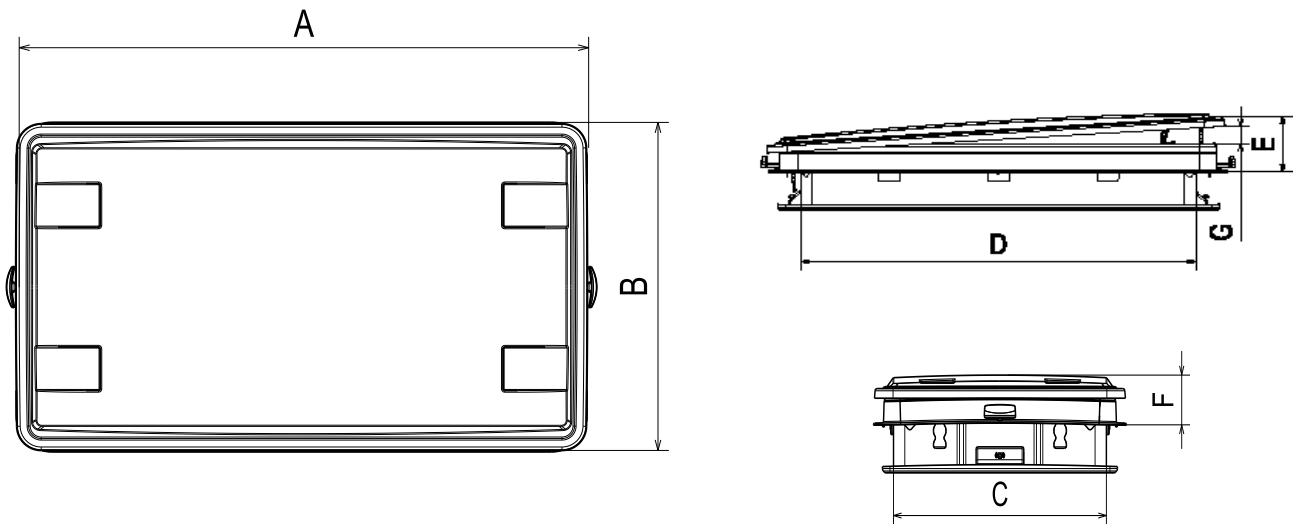
Elexx is the first roof hatch of its kind. The combination of a service hatch with central locking system is unique. The service function makes it possible to open the hatch like a door due to the clever patented hinged mechanisms. Accessing the roof through a service hatch to maintain A/C or other devices on the roof offers a huge easy to operate advantage for customers.

Since the hatch can be opened like a door, Elexx furtheron provides excellent ventilation performance for the passengers even while stationary.

The safety-relevant central locking system prevents from unwanted entry. All in all Elexx meets all safety and comfort requirements of today.

FEATURES

- Three in one unit: service – safety – ventilation
- FMVSS-571-217 emergency exit
- Easy to operate, maintenance free
- Fast mounting by bonding
- Lightweight with a total mass of 9,9 kg
- Excellent heat and cold insulation due to dual-shell dome
- Completely UV resistant due to dual-layer outer surface material, durable
- Extremely strong, yet lightweight composite mechanism, more wind resistant
- Hinged service hatch
- Central locking system
- New inner frame with a more elegant look inside the vehicle



TECHNICAL DATA

Technical specifications

Measurements (mm)	Roof Cut-off 530 x 970	A Dome Length 1042	B Dome Width 599	C Inner Width 505±3	D Inner Length 802	E Height (open) 132	F Height (closed) 72	G Opening 60
-------------------	---------------------------	--------------------------	------------------------	---------------------------	--------------------------	---------------------------	----------------------------	--------------------

<b>Mass</b>	Roof hatch 7.8 kg	Interior trim ≈1.5 kg / T=50	
<b>Other</b>	Glass: 4mm safety glass, LT ≈16%	Ventilation operation: Manual	Emergency release: Hammer / handles
<b>Approvals</b>	UN ECE R.107r4 Emergency Exit	UN ECE R.118.01 Flammability	