



Merely illustrative image

AIR CONDITIONING

Coaches / Citybus

CC450

CC470

CC490

Best relationship between Weight x Performance

Reliability

Thermal Comfort



FOC 186_REV.00/April 2022



Technical Data

Highlights	CC450	CC470	CC490
Maximum capacity	153.600 BTU/h (45 kW)	160.400 BTU/h (47 kW)	167.200 BTU/h (49 kW)
Flow of evaporator	8.800 m ³ /h	8.800 m ³ /h	8.800 m ³ /h
Flow of condenser	17.400 m ³ /h	17.400 m ³ /h	17.400 m ³ /h
Roof unit weight *	175 kg	175 kg	175 kg
Refrigerant gas **	R134a - 5 kg	R134a - 5 kg	R134a - 5 kg
Compressor weight ***	18,1 kg	32 kg	32 kg
Compressor	TM 65 / 635 cm ³	Bock FK40 / 650 cm ³	Bock FK40 / 755 cm ³
Dimension (L x W x H) (mm)	3500 x 1695 x 220	3500 x 1695 x 220	3500 x 1695 x 220
Roof radius (mm)	5.500 - 12.000	5.500 - 12.000	5.500 - 12.000

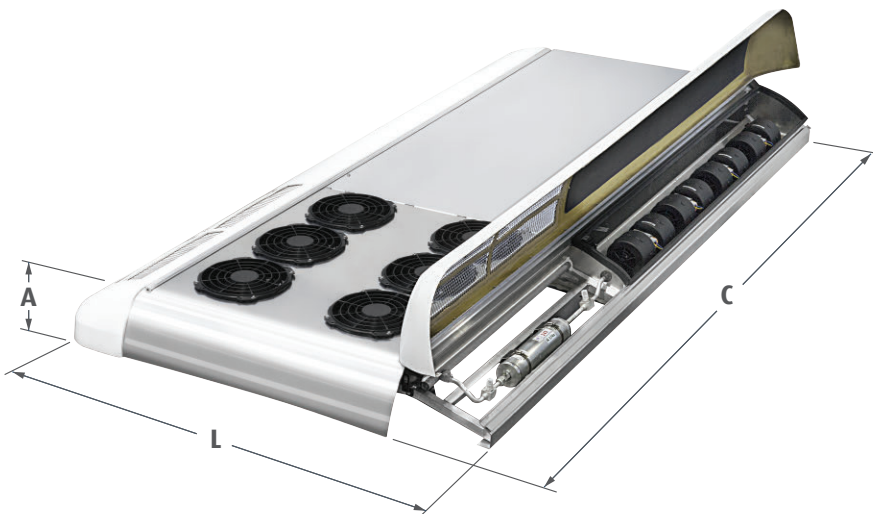
* Weight of rooftop unit without integrated heating system.

** Gas load values vary according to application.

*** Compressor weight without clutch.

Optional	Highlights	CC450 - CC470 - CC490
Integrated heating system	Heating capacity	153.600 BTU/h (45 kW)
Fresh air system	Fresh air capacity *	25%

* Referring total flow of the evaporator.



Highlights

- High cooling capacity
- High airflow
- Low noise
- Low operational cost
- Easy maintenance
- Produced from sustainable material
- Evaporator with 8 blowers
- Condenser with 6 Fans

Application

- Citybus
- Coaches

Technical Features

Digital Electronic Control

- Smart commands
- Automated control (keeps the AC at the programmed temperature)
- Fresh air flap manually or automatically controlled
- Alarms for fault diagnosis

Relay Board

- High reliability
- Easy maintenance

Compressor

- High performance
- Long durability

Blower/Fan

- Low noise
- High performance
- Long durability

