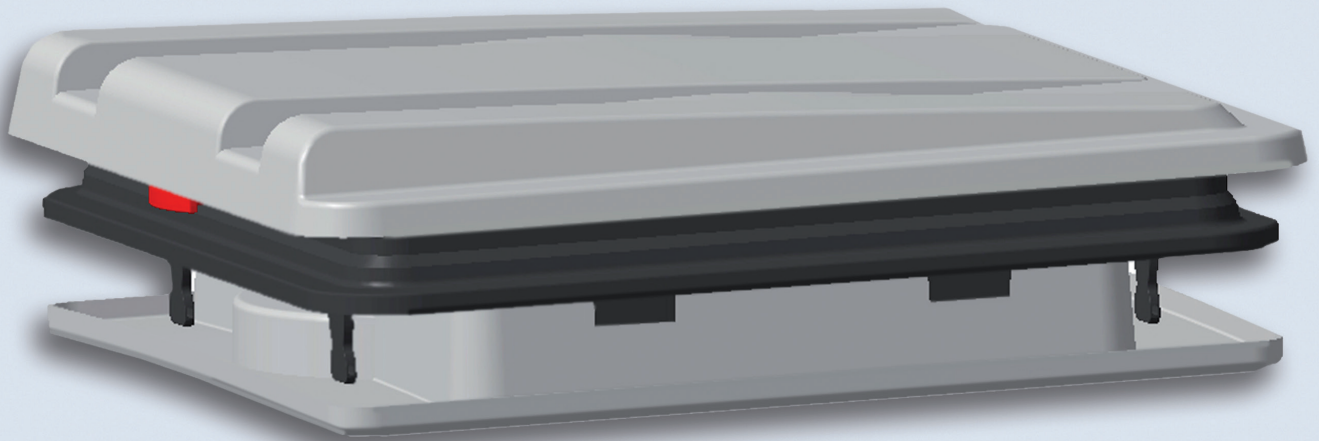


VENTO HATCH



SAFETY AND COMFORT

Vento Hatch is being introduced in the market for meeting smaller opening requirement.

It offers easy re-latching with extremely strong, yet light weight mechanisms which ensure optimal ventilation. The dual wall structure gives excellent heat and cold isolation. The newly designed inner frame gives an elegant look to the bus.

The cost effective solution has been provided through local engineering skills with support from German experts.

HIGHLIGHTS

- Excellent air ventilation- free/forced
- Integrated roof design, space to attach roof lining
- Excellent heat and cold isolation due to dual-shell dome
- UV and weather proof materials
- No operating costs for ventilator hatch

Available variants



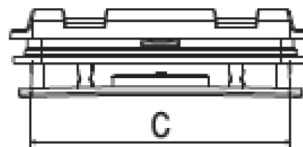
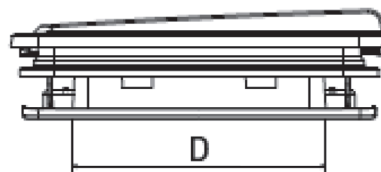
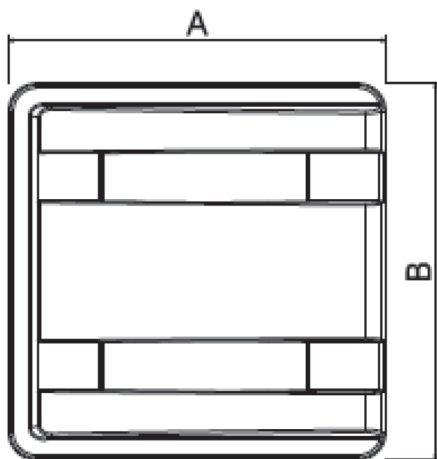
Vento Basic



Vento with emergency exit



Vento with fan with emergency exit



TECHNICAL DATA

	Vento Hatch W/o emergency exit	Vento Hatch with emergency exit	Vento Hatch with fan
Roof cut out (L x W mm)	510 x 525	510 x 525	510 x 525
Dome (A x B mm)	610 x 610	610 x 610	610 x 610
Interior opening (D x C mm)	400 x 520	400 x 520	400 x 520
Opening (mm)	55	55	55
Height Open (mm)	170	170	170
Height Closed (mm)	115	115	115
Ventilator Voltage	-	-	24V
Air flow	-	-	200m ³ /h
On load current	-	-	<3.3A