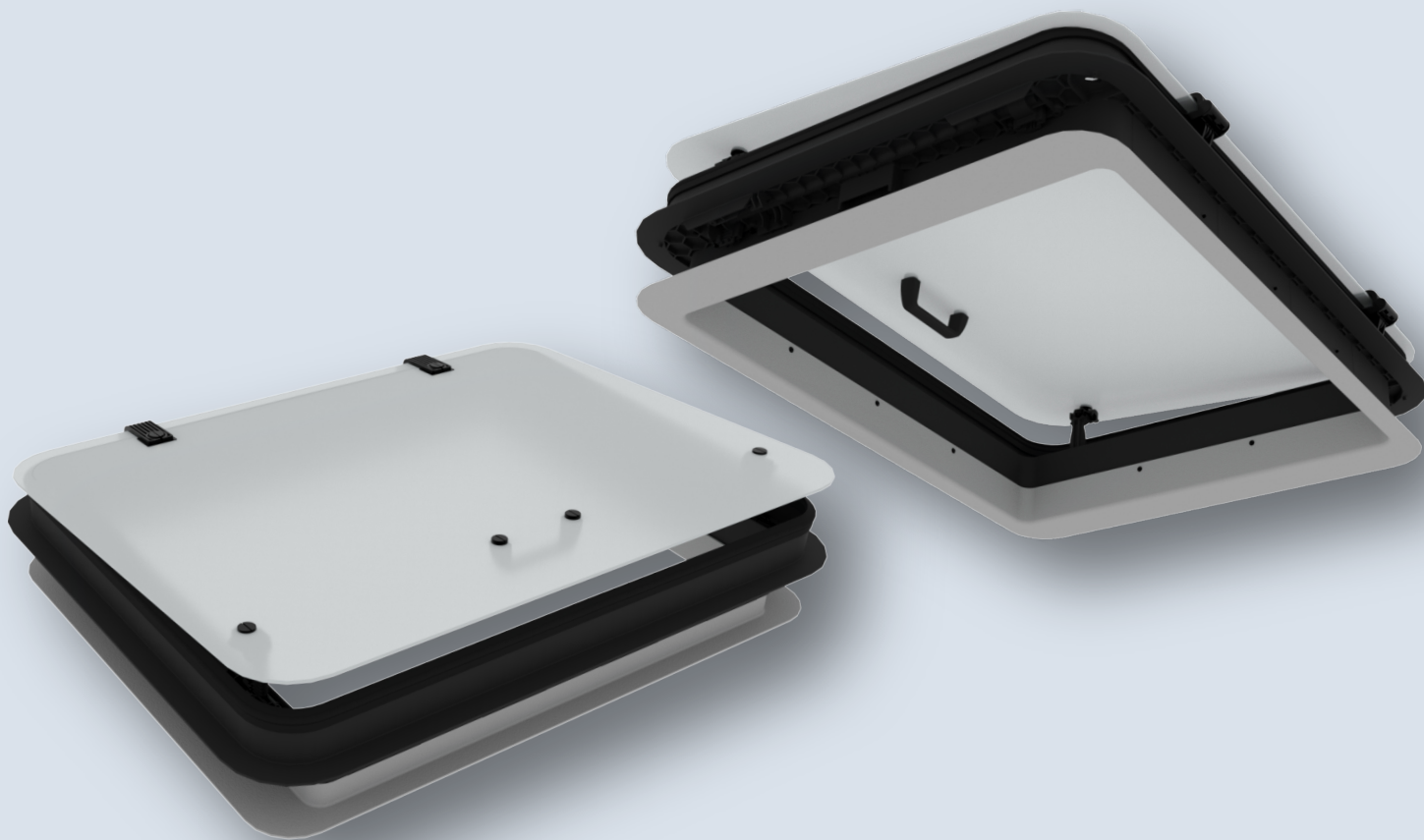


EMERGENCY ESCAPE VENTILATION HATCH

FIT SERIES

TRANSVERSAL FIT



GLOBAL SAFETY WITH CO2 FREE VENTILATION AGILE AND SPACE SAVING INSTALLATION

FIT series transversal versions are a solution what the industry has been looking for. Limited amount of space on the roof and more demanding legal requirements in terms of material and size are challenges. We at Valeo see that the transversal installation solves some of them.

The Fit Series Emergency Exit Ventilator hatches are designed to meet the Global Safety standards. It will comply with the following regulations: UN ECE, FMVSS, CCAP, and ADR 44/02.

The hatches are available with manual or electric 12/24V remote control mechanisms and with glass or plastic domes. The electric version can be operated with analog switches, with a dedicated Driver Unit, or with a CAN control. Thus the ventilation system can be fully integrated to the vehicle HVAC environment.

Transversal FIT is limited to open only at one end. This makes the hatch a fraction lighter and a fraction more affordable - without jeopardizing the main purpose: safety

Escape mechanisms are independent from interior trim. This makes it possible for the body builder to design their own inner trim or use the Valeo universal version.

VALEO-THERMALBUS.COM



HIGHLIGHTS



Safety

- Easy emergency escape release
- Boosts air exchange in vehicle
- No glass break hammer required (optional)
- Minimizes infection risk



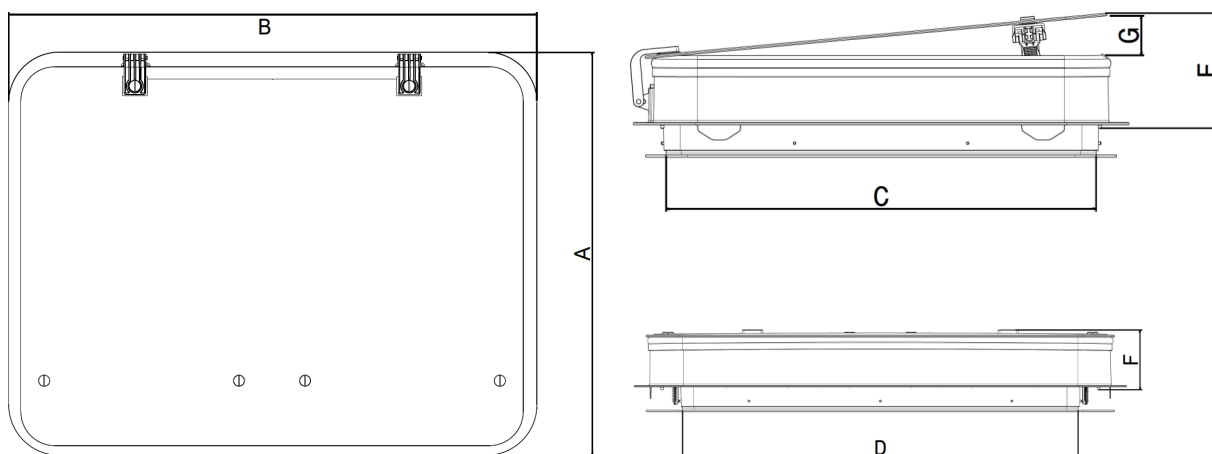
Comfort

- Manual or electric remote operation
- Analog or digital interface
- Dedicated Driver Unit available
- CAN integration



Environmentally friendly

- Materials are recyclable
- Maintenance free for life
- No operation cost
- Integration to vehicle HVAC system
- Light weight saves energy



TECHNICAL DATA

FIT Series Transversal Fitting	FIT	FIT Comfort	FIT Clear	FIT Clear Comfort
Cut-off (mm)	630 x 880 ^{±3} R60	630 x 880 ^{±3} R60	630 x 880 ^{±3} R60	630 x 880 ^{±3} R60
Dome (mm)	(A) 748 x (B) 978	(A) 748 x (B) 978	(A) 690 x (B) 910	(A) 690 x (B) 910
Interior opening (mm)	(C) 615 x (D) 746	(C) 615 x (D) 746	(C) 615 x (D) 746	(C) 615 x (D) 746
Height open / closed (mm)	(E) 147 / (F) 96	(E) 147 / (F) 96	(E) 121 / (F) 70	(E) 121 / (F) 70
Ventilation opening (mm)**	(G) 48	(G) 48	(G) 48	(G) 48
Weight Hatch (kg)**	8.9	9.1	8.0	9.0
Weight inner trim (kg)**	0.5	0.5	0.5	0.5
Operation Voltage (V)	(-)	9-32 VDC	(-)	9-32 VDC
Control unit	(-)	Digital or Analog control DHC2, DU, CAN	(-)	Digital or Analog control DHC2, DU, CAN
Dome	ASA protected ABS	ASA protected ABS	4mm Safety Glass White Milk Glass	4mm Safety Glass White Milk Glass
Fuse (A)	(-)	5A	(-)	5A
Glazing Material	(-)	(-)	UN ECE R.43.01s2	UN ECE R.43.01s2
Emergency Exit Approval	R.107.08, FMVSS, CCAP, ADR 44/02	R.107.08, FMVSS, CCAP, ADR 44/02	R.107.08, FMVSS, CCAP, ADR 44/02	R.107.08, FMVSS, CCAP, ADR 44/02
Flammability approval	UN ECE R.118.03	UN ECE R.118.03	UN ECE R.118.03	UN ECE R.118.03
EMC approval	(-)	UN ECE R10.05	(-)	UN ECE R10.05